

Doors

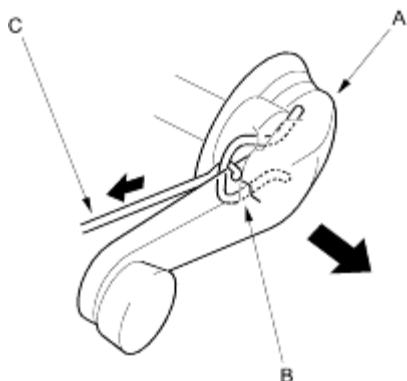
Front Door Panel Removal/Installation

20-7

Special Tools Required

Trim pad remover, Snap-On # A 177 or equivalent, commercially available.

1. If applicable, remove the regulator handle (A) by pulling the clip (B) out with a wire hook (C).



2. Remove the inner handle (A). Take care not to scratch the door panel.

1. Pry out on the upper portion of the cover (B) to release the hooks (C, D), then remove the cover.

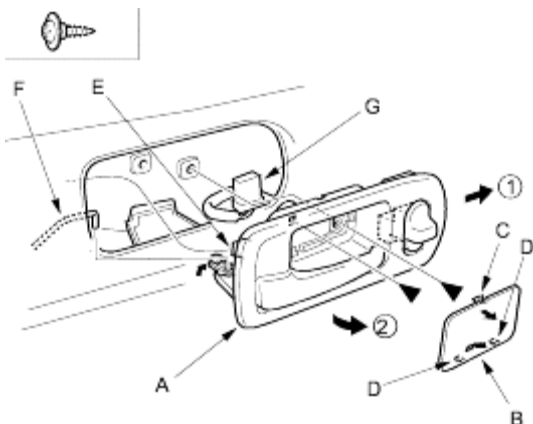
2. Remove the screws.

3. Pull the inner handle forward and out half-way to release the hook (E).

4. Disconnect the inner handle rod (F) and power door lock switch connector (G) (driver's for some models).

Fastener Locations

►: Screw, 2



3. Remove the grip cover (A). To remove the passenger's grip cover, refer to rear door panel removal and installation (see page [20-15](#)).

1. Using a flat-tip screwdriver wrapped with protective tape, pry out the front edge of the cover to release the clips (B).

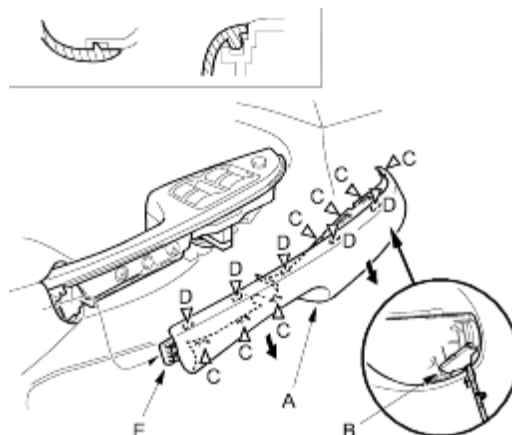
2. Pry out along the bottom to release the lower hooks (C).

3. Pry out along the top to release the upper hooks (D), and release the clip (E) while pulling the cover forward.

Fastener Locations

C ►:
Hook,
7

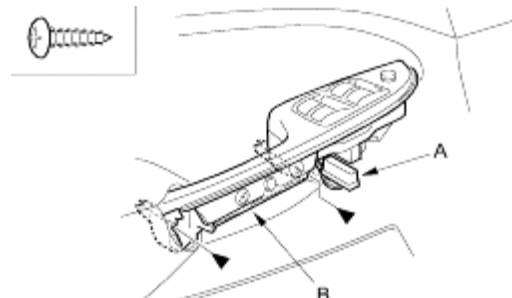
D ►:
Hook,
5



4. Driver's door: Disconnect the power window switch connector (A) (for some models). Remove the screws from the grip base (B).

Fastener Locations

►: Screw, 2



5. Remove the mirror mount cover (see step 2 on page [20-33](#)).

Doors

Front Door Panel Removal/Installation (cont'd)

20-8

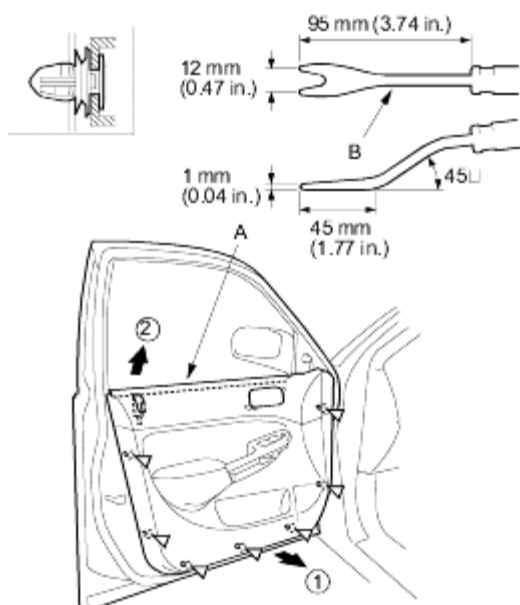
Front door Outer Handle Replacement

6. Release the clips that hold the door panel (A) with a commercially available trim pad remover (B), then remove the door panel by pulling it upward. Passenger's door: Disconnect the power window switch connector (for some models). Remove the door panel with as little bending as possible to avoid creasing or breaking it.

Fastener Locations

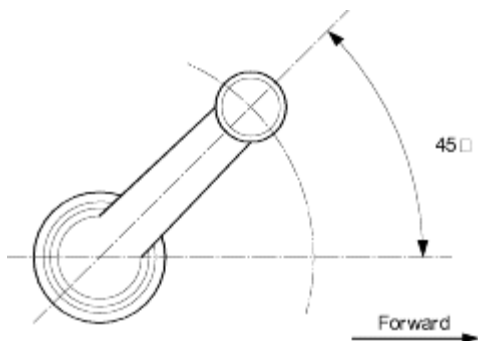
▷: Clip, 7

7.



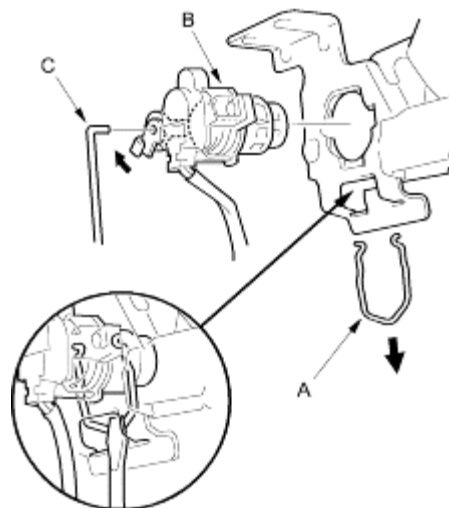
7. Install the door panel in the reverse order of removal, and note these items:

- Replace any damaged clips.
- Make sure the connectors are plugged in properly, and the rod is connected properly.
- If applicable, install the regulator handle so it points forward and up at a 45° angle with the glass fully closed.



NOTE: Put on gloves to protect your hands.

1. Raise the glass fully.
2. Remove these items:
 - Door panel (see page [20-7](#))
 - Plastic cover, as necessary (see page [20-3](#))
3. Release the retainer clip (A), then remove the lock cylinder (B). Disconnect the cylinder rod (C).



4. With cylinder switch: Remove the screw, then separate the lock cylinder (A) and cylinder switch (B).

Fastener Location

▶: Screw, 1

